

HIGH ALTITUDE BULL SALE

Sale to be held at the Thorbardin Ranch
west of Laramie, Wyoming, Exit 297

WEDNESDAY
APRIL 14, 2010

Lunch at Noon • Sale at 1:00 pm

75 + PAP Tested Bulls

*Bulls were wintered at 7250' in Laramie, WY
and PAP tested by Dr. Tim Holt*



PO Box 272
HOBSON, MT 59452

www.STEVENSONGENETICS.COM

STEVENSON ANGUS

406/ 423-7500 office
Keith, Darrell, Bob & Jake
406/ 350-5443 Darrell cell

STEVENSON'S DIAMOND DOT

406/ 374-2250
Clint & Adana
406/ 366-9023 Clint cell

WELCOME TO STEVENSON GENETICS



Bob, Darrell, Clint, Keith and Jake

Stevenson Family Members

Bob Stevenson, Stevenson Angus Ranch
(406) 350-5453 cell

Darrell Stevenson, Stevenson Angus Ranch
(406) 350-5443 cell

Clint Stevenson, Stevenson's Diamond Dot
(406) 374-2250, (406) 366-9023 cell

Keith Stevenson, Stevenson Angus Ranch
(406) 423-5450

Jake Stevenson, Stevenson Angus Ranch
(406) 570-4799 cell

Additional Stevenson Genetics Representatives

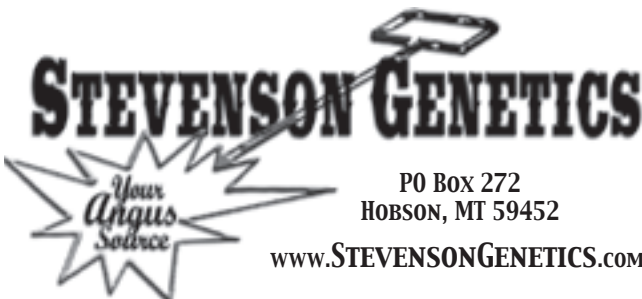
Ryan Hughes, Marketing & Customer Service
cell (406) 581-1873

WEDNESDAY APRIL 14, 2010

Lunch at Noon
Sale at 1:00

75 + PAP Tested Bulls

***Bulls were wintered at 7250' in Laramie, WY
and PAP tested by Dr. Tim Holt***



STEVENSON ANGUS
406/ 423-7500 office
Keith, Darrell, Bob & Jake
406/ 350-5443 Darrell cell

STEVENSON'S DIAMOND DOT
406/ 374-2250
Clint & Adana
406/ 366-9023 Clint cell



www.STEVENSONGENETICS.com

STEVENSON ANGUS

406/ 423-7500

STEVENSON'S DIAMOND DOT

406/ 374-2250

Sale Day Phones

Darrell 406/ 350-5443 Clint 406/ 366-9023
Bob 406/ 350-5453

Sale Location

Thorbardin Ranch west of Laramie, WY 14 miles on I80, exit 297. Turn east on Herrick Lane 1.2 miles, turn left onto Sprague Lane, next right take Carroll Lake Road 3.5 miles to the ranch.

Sale Staff

Joe Goggins Auctioneer
Blake Nuffer Northern Livestock Video
Curt Cox..... Wyoming Livestock Roundup
Matt Printz American Angus Association

Terms and Conditions

The cattle sell under the suggested terms and conditions of the American Angus Association.

Sight Unseen Purchase Guarantee

Buyers unable to attend the sale may call or send their bids to any of the Sales Staff or to Stevenson Genetics. We provide a complete satisfaction guarantee for cattle purchased in this manner. When cattle purchased "sight unseen" are delivered, the buyer can inspect the cattle. If they are not as represented, simply put them back on our truck.

Northern Livestock Video Auction

View online catalog and video at www.NorthernLivestockVideo.com **Sale will be Broadcast on Dish Network Channel 221 and will be on the Internet.** Registration to bid needs to be done prior to the sale. Call 1-866-616-5035 to Pre-register. Sale can be viewed on the internet with the option to use Northern Livestock's Sale Day Bid Line: 1-406-245-0889. To bid via the phone you must have a pre-registered buyer number. For more information call Northern Livestock Video Auction at 1-866-616-5035.



Live Auction Audio

Visit www.stevensongenetics.com OR www.stevensongenetics.net to listen and view the following: Live Auction Audio will broadcast, view the online catalog, view the pre-videos. Call to Pre-Register 406-423-7500 and to acquire the phone number to bid over. To bid via the phone you must have a pre-registered buyer number.

Announcements

Announcements sale day take precedence over any printed material.

Herd Health

All cattle will sell with proper health papers for interstate shipment. Brand inspector and veterinarian will be available sale day for transport or health questions.

Payment

Payment is due in full sale day unless prior arrangements have been made. Interest will be incurred on over due accounts.

Delivery

In respect to the Thorbardin Ranch, we will try to deliver everything within a week of the sale pending interstate health restrictions. Everyone is welcome to bring their trailer, pick up your bulls and receive a \$50 discount per bull, this of course pending interstate health requirements.

Inspection of Cattle

The cattle are available for inspection at the Thorbardin Ranch. Contact Cody Talbott at 307/ 760-5914.

Bull Development

Bulls were all raised and developed at our headquarter ranches in Montana. They were performance tested with yearling weights and ultrasound data taken in January. They were then shipped to Laramie mid-February to be wintered on a maintenance ration. After six weeks at that elevation, Dr. Tim Holt felt confident in an accurate PAP test which was taken March 27.

FIRST YEAR BREEDING GUARANTEE

All bulls selling for \$2000 or more will be covered 50% by Stevenson Genetics if they are injured during their first breeding season and not able to return to service during that first breeding season. Breeding season is defined as the 90-day period following the first turnout of the bulls.

50% of the value of the injured bull, minus one-half salvage value, will be given as credit in a future sale or toward a replacement bull if one is available. Salvage value, if any, will be split equally between Stevenson Genetics and the buyer. All injured bulls must be diagnosed by a veterinarian. Please notify us as soon as possible should injury occur and prior to the injured bull being sold for salvage. All claims must be made by September 1, 2010.

Example 1: A \$5,000 bull is injured, a credit of \$2,500 minus one-half any salvage value will be given to the buyer.

Example 2: A \$2,000 bull is injured, a credit of \$1,000 minus one-half of any salvage value will be given to the buyer.

Example 3: A \$1,750 bull is injured, no credit is given. Buyer retains all salvage value.

Bull Lot Information

Birth (BW) EPD is a predictor of progeny birth weight attributed to the parent.

Weaning (WW) and Yearling (YW) EPDS are predictors of the animal's ability to transmit weaning growth and yearling growth to its progeny.

Milk EPD is a predictor of an animal's genetic merit for milk and mothering ability.

Marb EPD Marbling EPD (Marb), expressed as a fraction of the difference in USDA marbling score of a sire's progeny compared to progeny of other sires.

RE EPD Ribeye Area EPD (RE), expressed in square inches, is a predictor of the difference in ribeye area of a sire's progeny compared to progeny of other sires.

Calving Ease Rating (CE)

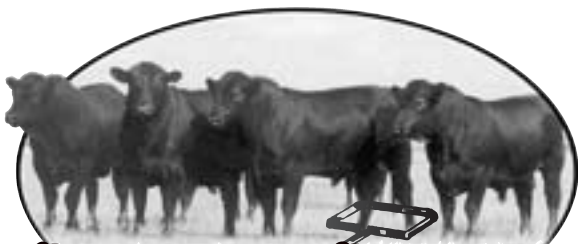
- ★★★★ Excellent calving ease, use with confidence on any type of heifers.
- ★★★ Superior calving ease, should work with most heifers and most situations.
- ★★ Moderate calving ease, most people will use these bulls on cows, but they can be used on heifers if calving ease is of less concern.
- ★ We recommend these bulls just for use on cows.

PAP Scores Scores were taken March 27 by Dr. Tim Holt at 7250' elevation.



406/ 538-7988
Lewistown, MT
www.BallyhooPrinting.com





STEVENSON GENETICS



PO BOX 272
HOBSON, MT 59452

WWW.STEVENSONGENETICS.COM

Fellow Cattleman,

We would like to invite you to our second annual High Altitude Bull Sale, held in Laramie, Wyoming. Stevenson Genetics is a joint marketing effort between two family ranches, Stevenson's Diamond Dot and Stevenson Angus Ranch, both of Hobson, Montana. Our family has been serving registered and commercial cattlemen for over 50 years with high quality Angus cattle. Stevenson Genetics holds two production sales at home every year, along with year round private treaty bull sales. We are excited to once again offer quality, PAP tested bulls to our high altitude customers.

Our basic philosophy and course of action would be remiss without mentioning our longtime good friend and main influence behind this market, Gary Parker of Shamrock Angus. Gary was a lifetime friend, worked with us for several years and eventually built the Shamrock herd into a much respected herd suitable for the challenges at higher altitudes. With Gary's knowledge and resilience as a breeder and the guidance of Dr. Tim Holt's PAP testing, all cattlemen are now benefitting from the years of research and testing. The entire industry suffered a great loss with the passing of Gary and his leadership. The ultimate dispersal of the Shamrock herd further emphasized that loss.

Today, we have several customers in Colorado, Utah and Wyoming that request bulls suitable for higher altitudes. Our home ranches run at about 4500 feet, much too low for an accurate PAP test. For several years we have tried to service these customers with guarantees, replacement bulls and unnecessary time and expense. It wasn't cost prohibitive.

We view this as an opportunity to upgrade

our customer service and provide a fully tested product. Of course, we welcome the opportunity to meet new friends and possible customers, but our primary concern is to better service our already existing customer base.

This bull offering was selected in January prior to our home spring bull sale. The bulls were raised on our home ranches in Montana, weaned and performance tested through January when yearling weights and ultrasound scan data were collected. The bulls all passed a fertility test before being shipped to the Thorbardin Ranch west of Laramie mid-February. The bulls are on a maintenance ration and were PAP tested by Dr. Tim Holt late March.

This bull offering was selected in January prior to our home spring bull sale. All bulls are clean by pedigree or test for the genetic defects AM and NH. The bulls were raised on our home ranches in Montana, weaned and performance tested through January when weaning weights and ultrasound scan data were collected. This year, bulls were also selected on a preliminary PAP test here at home on January 2 and 3, 2010 by Dr. Tim Holt.

We'd like to take this opportunity to extend our sincerest appreciation to Cody and Katie Talbott and the rest of the crew at the Thorbardin Ranch. As you will see, the bulls have been well cared for, and we are excited to be working with such an enthusiastic group.

We look forward to seeing you sale day, shaking your hand and discussing good Angus cattle.

Best regards,

The Stevenson Crew

From the families and crew of
Stevenson Angus and
Stevenson's Diamond Dot
Keith, Clint, Darrell, Bob and Jake Stevenson

www.STEVENSONGENETICS.COM



STEVENSON ANGUS
406/ 423-7500 office
Keith, Darrell, Bob & Jake
406/ 350-5443 Darrell cell

STEVENSON'S DIAMOND DOT
406/ 374-2250
Clint & Adana
406/ 366-9023 Clint cell

www.stevensonsdiamonddot.com

RANCH RAISED BULLS

These Yearling Angus Bulls represent our most progressive genetics born in 2009. This offering is comprised of the January and February bull calves. Bulls born after March 1st are saved to be developed and sold as two-year olds.

These calves were raised from birth to weaning with no creep feed. After weaning, the calves are fed a high roughage growing ratio.

Weaning weights were taken in early September and yearling weights were taken the last week of January. The ultrasound EPDs listed in the catalog are the current EPDs after scanning.

These bulls are guaranteed breeders and have all passed a breeding soundness exam including a semen test. Scrotal measurements will be available sale day.

RETAINED INTEREST – We are selling **FULL POSSESSION** and **1/2 REVENUE-SHARING SEMEN INTEREST** in every bull in this sale. The bull you purchase is totally in your control regarding how you handle the bull and your natural service use. You receive 100% of the salvage value. Retaining a 1/2 revenue-sharing semen interest simply allows Stevenson Genetics the right to share in collection of semen, use of semen from the bull in our herds and the right to share in semen sale revenue if semen sales become a possibility on the bull.

Realistically, we will collect semen on only a small percentage of the bulls selling. It will be an even smaller number of bulls that will develop a market for semen sales. However, we are retaining an interest in every bull because we might identify the next great bull after he has sold, often later in life, after he has proven himself in the breeding pasture. If you have any questions or concerns about our retained interest policy, please talk to any of us listed as representatives on page 1 of this catalog for further explanation.





1

STEVENSON IN FOCUS W777

Bull

16277482

birth date: 1/18/09

Tattoo: W777

S A F FOCUS OF E R#

S A F FAME#

MYTTY IN FOCUS

G D A R FOREVER LADY 246

MYTTY COUNTESS 906

SITZ ALLIANCE 6595#

BALDRIDGE COUNTESS 357

BOYD ON TARGET 1083

S A F 598 BANDO 5175#

STEVENSON BARBARA LASS A8447

BOYD FOREVER LADY 7095

STEVENSON BARBARA LASS 7719#

BASIN RAINMAKER 654X#

STEVENSON BARBARA LASS 300G

Birth Weight **72** BW **-0.3** WW **+54** Milk **+28** YW **I+101**

CE **★★★★** Marb **+0.28** RE **-0.02** PAP **41**

A four star calving ease bull, LOT 1 also ranks in the top 15% for WW EPD and top 10% for YW EPD. He recorded 109 WW and 108 YW and 104 REA ratio. His dam was a first calf heifer and his next two dams recorded 6 NR 108, 6 YR 107 and 2 NR 103 with 2 YR 101.

2

STEVENSON IN FOCUS W594

Bull

16267628

birth date: 1/20/09

Tattoo: W594

S A F FOCUS OF E R#

S A F FAME#

MYTTY IN FOCUS

G D A R FOREVER LADY 246

MYTTY COUNTESS 906

SITZ ALLIANCE 6595#

BALDRIDGE COUNTESS 357

BR MIDLAND#

TWIN VALLEY PRECISION E161#

STEVENSON ELGA 23R5

BR ROYAL LASS 7036-19

STEVENSON ELGA 6938#

STEVENSON ROLLING THUNDER#

STEVENSON ELGA 4546#

Birth Weight **89** BW **+1.3** WW **+47** Milk **+20** YW **I+89**

CE **★★★★** Marb **+0.42** RE **+0.09** PAP **50+**

LOT 2 is a high performing, calving ease bull that recorded 100 YW. His second and third dams record 3 NR 104, 3 YR 104 and 4 NR 104 with 4 YR 104.

3

STEVENSON IN FOCUS 772W

Bull

16277490

birth date: 1/22/09

Tattoo: 772W

S A F FOCUS OF E R#

S A F FAME#

MYTTY IN FOCUS

G D A R FOREVER LADY 246

MYTTY COUNTESS 906

SITZ ALLIANCE 6595#

BALDRIDGE COUNTESS 357

GARTH G256

BALDRIDGE NOTCH A C#

STEVENSON LAVILLION T205

G A R EXT 614

STEVENSON LAVILLION 6902

BASIN MAX 602C#

STEVENSON LAVILLION D12F

Birth Weight **75** BW **+1.2** WW **+56** Milk **+21** YW **I+109**

CE **★★★★** Marb **+0.30** RE **+0.07** PAP **46**

Four star calving ease, LOT 3 recorded an impressive 108 WW and 111 YW to rank in the top 10% for WW EPD and top 25 for YW EPD. He recorded a big REA with 114 ratio. His dam was a first calf heifer, while his next two dams record 5 NR 101 and 10 NR 104 respectively.



4

DIAMOND MONEYMAKER 4339

Bull +620567538 *birth date:* 2/18/09 *Tattoo:* 4339

BOYD ON TARGET 1083
STEVENSON MONEYMAKER R185
 STEVENSON CLOVA PRIDE L888#

S A F 598 BANDO 5175#
 BOYD FOREVER LADY 7095
 VDAR AMBUSH 2478
 STEVENSON CLOVA PRIDE 712H
 G T MAXIMUM#
 BASIN ELINE ERICA 315U#
 J W JURRITE 16#
 DIAMOND LUCY 503H#

BASIN MAX 602C#
DIAMOND LUCY 180R
 DIAMOND LUCY 808L#

Birth Weight **86** *BW* **+2.7** *WW* **+59** *Milk* **+27** *YW* **+108**

CE ★★ *Marb* **+0.45** *RE* **+0.14** *PAP* **39**

MONEYMAKER sons have been one of the top sire groups in the past Stevenson Genetic sales because of their thickness, moderate frame, depth of body and overall performance. They have also been a low PAP Sire group. Lot 4's dam was a full sister to the high performance MAX 602C son DIAMOND MAX 180N and she recorded an outstanding production record of 2 NR 119, 1 YW 129, 19 IMF 102 and 19 REA 102 and she was a top selling donor in our 2009 elite female sale. Her daughter was a top selling bred heifer in the same sale and her dam. also a donor, recorded 5 NR 113 and 5 YW 113. LOT 4 is an ET calf that is a herd sire prospect.

5

DIAMOND MAX 490W

Bull 16335289 *birth date:* 2/14/09 *Tattoo:* 490W

BASIN MAX 602C#
DIAMOND MAX 568T
 DJ BARBARA PERFECTION R866

G T MAXIMUM#
 BASIN ELINE ERICA 315U#
 B/R NEW DESIGN 323-9150#
 ER BARBARA PERFECTION L061
 TWIN VALLEY PRECISION E161#
 BR ROYAL LASS 7036-19
 SCHURRTOP SUPREME#
 BASIN GREYSTONE JANNET 6779

BR MIDLAND#
DIAMOND JANNET 554
 BASIN GREYSTONE JANNET 3519

Birth Weight **85** *BW* **+0.8** *WW* **+45** *Milk* **+20** *YW* **I+93**

CE ★★★★★ *Marb* **+0.49** *RE* **+0.35** *PAP* **40**

LOT 5 is a heifer bull, sired by the BASIN MAX 602C son that excelled in Gene Star data and was a top selling bull in the Spring 2008 Stevenson Basin sale. LOT 5 recorded a 113 YW ratio and his dam has had 3 progeny scanned with a 109 IMF and 106 REA ratio. His maternal grandam, a donor, had a production record of 3 NR 115, 3 YW 109. 52 IMF 100 and 53 REA 109 and her dam was also a donor that recorded a 9 NR 107.

6

DIAMOND PAYWEIGHT 54W2

Bull 16317440 *birth date:* 1/23/09 *Tattoo:* 54W2

VERMILION PAYWEIGHT J847#
BASIN PAYWEIGHT 025S
 BASIN LUCY 3829

VERMILION DATELINE 7078#
 VERMILION LASS 7969
 C A FUTURE DIRECTION 5321#
 BASIN LUCY 178E
 RITO 616 OF 4B20 6807#
 KEYSTONE GLITTER 478#
 BASIN RAINMAKER F144
 KEYSTONE BELL 925#

KEYSTONE 616 WINK
KEYSTONE BELL 542
 KEYSTONE BELL 187

Birth Weight **96** *BW* **+2.7** *WW* **+48** *Milk* **+26** *YW* **I+109**

CE ★★ *Marb* **+0.42** *RE* **+0.03** *PAP* **42**

Lot 6 is a thick butted, high performance bull that recorded a 122 YW ratio and scanned a 105 IMF ratio. His sire is one of the top PAYWEIGHT sons with his performance and added carcass merits. LOT 6 ranks in the top 2% of the breed for YW among non -parent bulls and has the genetics to improve almost any herd.



7

STEVENSON ULTIMATE W121

Bull 16371066 *birth date:* 2/18/09 *Tattoo:* W121

S S OBJECTIVE T510 OT26#
G A R ULTIMATE
 G A R LOAD UP 1314

S S TRAVELER 6807 T510#
 S S MISS RITA R011 7R8
 RAB-GAR LOAD UP 4049J
 G A R NEW DESIGN 80

STEVENSON BRUNO 561G#
STEVENSON MS EXT D45L
 N R MS EXT 52

STEVENSON ROYCE 741C#
 JRS ENCHANTRESS 16A
 N BAR EMULATION EXT V1490
 TAIL N 0879

Birth Weight **77** *BW* **+3.1** *WW* **+49** *Milk* **+26** *YW* **I+86**

CE ★ *Marb* **+0.53** *RE* **+0.29** *PAP* **50+**

LOT 7 recorded 101 WW and 103 YW along with 108 IMF and 102 REA. His is a well balanced individual produced from a strong cow family where his first three dams record 6 NR 103, 9 NR 103 and 3 NR 102.

8

STEVENSON ULTIMATE W492

Bull 16283154 *birth date:* 1/28/09 *Tattoo:* W492

S S OBJECTIVE T510 OT26#
G A R ULTIMATE
 G A R LOAD UP 1314

S S TRAVELER 6807 T510#
 S S MISS RITA R011 7R8
 RAB-GAR LOAD UP 4049J
 G A R NEW DESIGN 80

STEVENSON SALUTE
STEVENSON CLOVA PRIDE 949P
 STEVENSON CLOVA PRIDE 7479

ROCKN D AMBUSH 1531#
 STEVENSON MISS BLIZZARD 6759
 GARDENS EXPEDITION#
 STEVENSON CLOVA PRIDE 404G

Birth Weight **97** *BW* **+3.3** *WW* **+52** *Milk* **+26** *YW* **I+94**

CE ★ *Marb* **I+0.52** *RE* **I+0.37** *PAP* **45**

LOT 8 recorded 102 WW and 103 YW along with 108 REA. He ranks in the top 20% for both WW and YW EPDs. His first three dams record 4 NR 102, 5 NR 102 and 6 NR 104.

9

STEVENSON ULTIMATE 707W

Bull 16283147 *birth date:* 1/17/09 *Tattoo:* 707W

S S OBJECTIVE T510 OT26#
G A R ULTIMATE
 G A R LOAD UP 1314

S S TRAVELER 6807 T510#
 S S MISS RITA R011 7R8
 RAB-GAR LOAD UP 4049J
 G A R NEW DESIGN 80

STEVENSON MONEYMAKER R185
STEVENSON ENCHANTRESS 5467
 STEVENSON ENCHANTRESS 9595#

BOYD ON TARGET 1083
 STEVENSON CLOVA PRIDE L888#
 STEVENSON AMERICAN IDOL 9273
 STEVENSON ENCHANTRESS 835J

Birth Weight **72** *BW* **+1.6** *WW* **+60** *Milk* **+26** *YW* **I+111**

CE ★★★★★ *Marb* **+0.44** *RE* **+0.27** *PAP* **44**

Four star calving ease, LOT 9 performed well within his contemporary recording 106 WW and 111 YW. He scanned 109 IMF and 103 REA. He has a big spread for EPDs ranking in the top 3% for WW EPD and top 2% for YW EPD. His dam was a first calf heifer and his next two dams record 3 NR 106, 3 YR 104 and 6 NR 101 with 5 YR 102.



10 DIAMOND HIGH DEFINITION 32W5

Bull 16580699 *birth date:* 2/13/09 *Tattoo:* 32W5
 RIVERBEND MILE HIGH 3718 BON VIEW NEW DESIGN 1407#
BASIN HIGH DEFINITION 3T84 G A R PRECISION 1919#
 BASIN LUCY 804N C A FUTURE DIRECTION 5321#
 BASIN LUCY 178E
 STEVENSON VERSATILE 4440 S A F FOCUS OF E R#
R&S HEIRESS 8753# JRS ENCHANTRESS 16A
 R&S HEIRESS 0458 STEVENSON BUZZ 831F
 R&S HEIRESS 260

Birth Weight **96** *BW* **+3.1** *WW* **+59** *Milk* **+30** *YW* **I+94**

CE ★★ *Marb* **+0.42** *RE* **+0.31** *PAP* **37**

LOT 10 was Clint's pick of the bulls when they were shipped from Hobson, he is the right size, with thickness, with enough performance, high maternal and balanced carcass traits. He recorded a 106 WR and 103 YW and his dam has a production record of 5 NR 111 and 5 REA 104. LOT 10 is a herd sire prospect that ranks in the top 5% of the breed for WW AND top 25% for both MARB AND REA EPD.

11 DIAMOND CE DELUXE 9733

Bull 16335194 *birth date:* 2/4/09 *Tattoo:* 9733
 C A FUTURE DIRECTION 5321# G A R PRECISION 1680#
STEVENSON CE DELUXE 1914 C A MISS POWER FIX 308
 FSHK PRIDE 180# SITZ ALLIANCE 6595#
 FSHK PRIDE 725
 DIAMOND MAX 180N BASIN MAX 602C#
DIAMOND ENCHANTRESS 425T DIAMOND LUCY 808L#
 DIAMOND ENCHANTRESS 295P BASIN RAINMAKER L974
 BASIN LADY ENCHANTRESS 054M

Birth Weight **70** *BW* **I+1.2** *WW* **I+59** *Milk* **I+26** *YW* **I+109**

CE ★★★★★ *Marb* **+0.40** *RE* **+0.33** *PAP* **50+**

LOT 11 is a four star calving ease bull that recorded a 116 NR and 115 YW ratio. He is a big spread EPD bull that ranks in the lightest 30% for BW , top 4% for WW and top 2% for YW EPD.

12 DIAMOND CE DELUXE W450

Bull 16335319 *birth date:* 2/16/09 *Tattoo:* W450
 C A FUTURE DIRECTION 5321# G A R PRECISION 1680#
STEVENSON CE DELUXE 1914 C A MISS POWER FIX 308
 FSHK PRIDE 180# SITZ ALLIANCE 6595#
 FSHK PRIDE 725
 VERMILION PAYWEIGHT J847# VERMILION DATELINE 7078#
DIAMOND BLACKCAP 710P VERMILION LASS 7969
 DIAMOND BLACKCAP 234G BASIN RAINMAKER 2844#
 BASIN BLACKCAP C S 815A

Birth Weight **77** *BW* **-0.1** *WW* **+54** *Milk* **+28** *YW* **I+107**

CE ★★★★★ *Marb* **+0.56** *RE* **+0.39** *PAP* **38**

LOT 12 is a four star, negative birth weight calving ease bull that recorded a 102 WR and a 113 YW ratio. His dam is from the high production BLACKCAP cow family that has produced several herdsires and sale toppers, including our foundation sire, DIAMOND RAINMAKER 154E and the \$13,000 DIAMOND PAYLOAD 982S.



13

STEVENSON ANALYST 3149

Bull 16289023 *birth date:* 2/3/09 *Tattoo:* 3149
 B C C BUSHWACKER 41-93# PARAMONT AMBUSH 2172#
DR J ANALYST M250 R C ANITA T BANDO 918903
 G A R PRECISION 706 G A R PRECISION 1680#
 G A R EXT 2114
 C A FUTURE DIRECTION 5321# G A R PRECISION 1680#
STEVENSON HEATHER ZELDA N176# C A MISS POWER FIX 308
 STEVENSON HEATHER ZELDA L852 ANKONIAN ELIXIR 100#
 W J S HEATHER ZELDA 925Y

Birth Weight **97** *BW* **+3.7** *WW* **+51** *Milk* **+26** *YW* **I+87**

CE ★ *Marb* **+0.67** *RE* **+0.32** *PAP* **50+**

LOT 13 recorded 104 WW and 100 YW with 114 IMF. He is a very thick made bull from an outstanding cow family where his first three dams record 5 NR 103, 4 YR 105 and 3 NR 109, 3 YR 108 and 9 NR 110 with 8 YR 113.

14

STEVENSON ALL AROUND I358W

Bull +16406252 *birth date:* 1/29/09 *Tattoo:* I358W
 CONNEALY WHITMAN BON VIEW NEW DESIGN 208#
CONNEALY ALL AROUND ELLA TINA OF CONANGA 989
 ENTRUST OF CONANGA 894 C R A BEXTOR 872 5205 608#
 ENDALLA OF CONANGA 4860
 C A FUTURE DIRECTION 5321# G A R PRECISION 1680#
STEVENSON LADY 626 C A MISS POWER FIX 308
 STEVENSON LADY 4654 BOYD ON TARGET 1083
 STEVENSON LADY 484D#

Birth Weight **100** *BW* **I+1.9** *WW* **I+55** *Milk* **I+28** *YW* **I+95**

CE ★★★ *Marb* **+0.62** *RE* **+0.13** *PAP* **40**

LOT 14 is an ET calf that ranks in the top 10% for WW and top 20% for YW EPD. He also ranks in the top 15% for MILK EPD and top 10% for MARB EPD. Great cow family.

15

STEVENSON ALLIANCE W538

Bull 16287213 *birth date:* 2/14/09 *Tattoo:* W538
 KMK ALLIANCE 6595 I87# SITZ ALLIANCE 6595#
KMK ALLIANCE I87 N24 G A R EXT 916#
 KMK EVERELDA ENTENSE J495 S A F 598 BANDO 5175#
 SITZ EVERELDA ENTENSE 1137
 BOYD ON TARGET 1083 S A F 598 BANDO 5175#
STEVENSON ZARA R861 BOYD FOREVER LADY 7095
 STEVENSON ZARA 4348 STEVENSON FORTUNE 425C#
 STEVENSON ZARA 303D#

Birth Weight **93** *BW* **+4.2** *WW* **+56** *Milk* **+24** *YW* **I+98**

CE ★ *Marb* **+0.23** *RE* **+0.03** *PAP* **41**

LOT 15 recorded 109 WW and 108 YW with 102 REA. He ranks in the top 10% for WW EPD and top 15% for YW EPD. First three dams record 3 NR 103, 3 YR 104 and 7 NR 102, 5 YR 104 and 3 NR 105 with 3 YR 103.



16

DIAMOND CORONA W523

Bull +16580698 *birth date:* 1/31/09 *Tattoo:* W523
 BON VIEW NEW DESIGN 1407# B/R NEW DESIGN 036#
SYDGEN 1407 CORONA 2016 BON VIEW PRIDE 664
 V N A R PERFECTION 142F 180K G A R PRECISION 1680#
 V N A R PERFECTION 142F
 KG DAKOTA# C A FUTURE DIRECTION 5321#
SYDGEN BLANCHE 4478 NEW TREND 315 K G 3#
 LEACHMAN BLANCHE 1019 G D A R TRAVELER 71#
 LEACHMAN BLANCHE 9059

Birth Weight **97** *BW* **+3.5** *WW* **+44** *Milk* **+26** *YW* **I+88**

CE ★★ *Marb* **+0.78** *RE* **+0.24** *PAP* **45**

LOTS 16 and 17 were purchased as embryos and are bred to be balanced trait bulls with good carcass and maternal. Their dam is from a top cow family and they rank in the very top 1% of the breed for MILK EPD.

17

DIAMOND CORONA 47W4

Bull +16580697 *birth date:* 1/27/09 *Tattoo:* 47W4
 BON VIEW NEW DESIGN 1407# B/R NEW DESIGN 036#
SYDGEN 1407 CORONA 2016 BON VIEW PRIDE 664
 V N A R PERFECTION 142F 180K G A R PRECISION 1680#
 V N A R PERFECTION 142F
 KG DAKOTA# C A FUTURE DIRECTION 5321#
SYDGEN BLANCHE 4478 NEW TREND 315 K G 3#
 LEACHMAN BLANCHE 1019 G D A R TRAVELER 71#
 LEACHMAN BLANCHE 9059

Birth Weight **99** *BW* **+3.8** *WW* **+44** *Milk* **+26** *YW* **I+89**

CE ★★ *Marb* **+0.73** *RE* **+0.19** *PAP* **50+**

The sire of LOT 17 SYDGEN 1407 CORONA 2016, is also found in the top side of the pedigree of our new herd sire HOOVER DAM, who is taking the industry by storm because of his moderate frame and incredible thickness. LOT 17 is an embryo full brother to LOT 16.

18

DIAMOND SHEAR FORCE 85W7

Bull +16329954 *birth date:* 1/27/09 *Tattoo:* 85W7
 N BAR PRIME TIME D806# GARDENS PRIME TIME#
G T SHEAR FORCE N BAR MISS EMULOUS A404
 G T SISKIN 106# PLOWMAN 1627 OF MILLBRAE SAR#
 G T ROSALITA 509
 RITO 1243 OF 2536 RDA ROCKN D AMBUSH 1531#
ER BARBARA PERFECTION 02P8 G A R PRECISION 2536
 ER BARBARA PERFECTION L059 S A F FOCUS OF E R#
 SITZ BARBARA PERFECTION 1882#

Birth Weight **85** *BW* **I+3.3** *WW* **I+49** *Milk* **I+18** *YW* **I+94**

CE ★★ *Marb* **+0.75** *RE* **+0.20** *PAP* **43**

LOT 18 is another embryo transplant bull and he ranks in the top 4% of the entire breed for MARB and top 45% for REA. We have used several SHEAR FORCE sons in natural service because of their outcross genetics to our program and their moderate frame and thickness.



19

STEVENSON PENDLETON W709

Bull 16300993 birth date: 1/17/09 Tattoo: W709

S A V FINAL ANSWER 0035#
HARB PENDLETON 765 J H
 H A R B BLACK LADY 375 J H#

SITZ TRAVELER 8180#
 S A V EMULOUS 8145
 H A R B HIGH PLAINS 975 JH#
 H A R B BLACK LADY 073 J H#

BOYD ON TARGET 1083
STEVENSON CLOVA PRIDE 21T3
 STEVENSON CLOVA PRIDE L901

S A F 598 BANDO 5175#
 BOYD FOREVER LADY 7095
 ROCKN D AMBUSH 1531#
 STEVENSON CLOVA PRIDE 7229

Birth Weight **74** BW **+0.9** WW **+57** Milk **+23** YW **I+103**

CE **★★★★** Marb **+0.18** RE **-0.01** PAP **42**

Four star calving ease, LOT 19 recorded an impressive 106 ratio for both WW and YW. He also scanned 105 REA. He ranks in the top 10% for both WW and YW EPDs. His dam is a picture perfect two year old and his grandam is our most valued current donor cow with more than \$600,000 worth of direct progeny sales.

20

STEVENSON PENDLETON W751

Bull 16301011 birth date: 1/13/09 Tattoo: W751

S A V FINAL ANSWER 0035#
HARB PENDLETON 765 J H
 H A R B BLACK LADY 375 J H#

SITZ TRAVELER 8180#
 S A V EMULOUS 8145
 H A R B HIGH PLAINS 975 JH#
 H A R B BLACK LADY 073 J H#

BOYD ON TARGET 1083
STEVENSON CLOVA PRIDE 52T9
 STEVENSON CLOVA PRIDE L901

S A F 598 BANDO 5175#
 BOYD FOREVER LADY 7095
 ROCKN D AMBUSH 1531#
 STEVENSON CLOVA PRIDE 7229

Birth Weight **77** BW **+1.3** WW **+60** Milk **+23** YW **I+111**

CE **★★★★** Marb **+0.34** RE **0** PAP **41**

Four star calving ease, LOT 20 recorded an outstanding 110 WW and 116 YW along with 104 IMF and 110 REA. He has a big spread for EPDs ranking in the top 3% for WW EPD and top 2% for YW EPD. Dam was a first calf heifer. Grandam is our most prolific and highest valued donor recording 2 NR 123, 1 YR 135, 143 IMF 100 and 143 REA 100.

21

STEVENSON PENDLETON W758

Bull 16301017 birth date: 1/20/09 Tattoo: W758

S A V FINAL ANSWER 0035#
HARB PENDLETON 765 J H
 H A R B BLACK LADY 375 J H#

SITZ TRAVELER 8180#
 S A V EMULOUS 8145
 H A R B HIGH PLAINS 975 JH#
 H A R B BLACK LADY 073 J H#

BOYD ON TARGET 1083
STEVENSON BRIDGET 5577
 STEVENSON BRIDGET 213R

S A F 598 BANDO 5175#
 BOYD FOREVER LADY 7095
 STEVENSON BENCHMARK N190
 STEVENSON BRIDGET 0882

Birth Weight **74** BW **+0.3** WW **+57** Milk **+25** YW **I+107**

CE **★★★★** Marb **+0.36** RE **-0.02** PAP **50+**

Four star calving ease, LOT 21 recorded 105 WW and 112 YW along with 106 IMF. He ranks in the top 10% for WW EPD and top 3% for YW EPD. Dam was a beautiful first calf heifer.



22

DIAMOND DATELINE 31W0

Bull 16335470 *birth date:* 2/19/09 *Tattoo:* 31W0
 BASIN DATELINE 752L VERMILION DATELINE 7078#
DIAMOND DATELINE 4149 BASIN GREYSTONE JANNET 974A
 DIAMOND BLACK LADY 6781 BASIN MAX 602C#
 DIAMOND BLACK LADY 316E
 GARDENS EXPEDITION# N BAR EMULATION EXT#
STEVENSON ENCHANTRESS 3877 GREEN GARDEN GINA 2268 S2
 STEVENSON ENCHANTRESS 4926 MED ROCK TRAVELER JR#
 STEVENSON ENCHANTRESS 196D

Birth Weight **85** *BW* **+0.8** *WW* **+54** *Milk* **+18** *YW* **I+91**

CE ★★★★★ *Marb* **+0.34** *RE* **+0.06** *PAP* **44**
 LOT 22 is a heifer bull that ranks in the lightest 25% for BW, the top 15% for WW and the top 25% for YW EPD. His maternal grandam has recorded 4 NR 109. Lot 22 recorded a 103 YW ratio.

23

DIAMOND PAYWEIGHT 9096

Bull 16580700 *birth date:* 2/7/09 *Tattoo:* 9096
 VERMILION PAYWEIGHT J847# VERMILION DATELINE 7078#
DIAMOND PAYWEIGHT 738N VERMILION LASS 7969
 DIAMOND TROJAN ERICA G272 G T MAXIMUM#
 BASIN TROJAN ERICA D S 637Y#
 KEYSTONE TREND V D A R NEW TREND 315#
KEYSTONE MINIVER 76 KEYSTONE LASSIE 12-31-2#
 KEYSTONE MINIVER 460 BASIN TRAVELER 46B
 KEYSTONE MINIVER 4622-243

Birth Weight **95** *BW* **+4.2** *WW* **+44** *Milk* **+19** *YW* **I+78**

CE ★ *Marb* **+0.04** *RE* **+0.03** *PAP* **42**
 LOT 23 is a performance bull, whose sire sold semen for export to Argentina and was a PAYWEIGHT bull who added depth, marbling, and is one of the top scrotal bulls of the breed.

24

DIAMOND PAYWEIGHT 11W1

Bull 16409217 *birth date:* 2/15/09 *twin* *Tattoo:* 11W1
 VERMILION PAYWEIGHT J847# VERMILION DATELINE 7078#
DIAMOND PAYWEIGHT 738N VERMILION LASS 7969
 DIAMOND TROJAN ERICA G272 G T MAXIMUM#
 BASIN TROJAN ERICA D S 637Y#
 CONNEALY FRONTLINE# CONNEALY DATELINE#
KEYSTONE BLACKCAP 111 PLEASANT PILL OF CONANGA#
 KEYSTONE BLACKCAP 5 RITO 2100 G D A R#
 KEYSTONE BLACKCAP 3-1313

Birth Weight **73** *BW* **I+3.6** *WW* **I+48** *Milk* **I+21** *YW* **I+92**

CE ★★ *Marb* **+0.30** *RE* **+0.23** *PAP* **40**
 Lot 24 had and actual BW of 74 lbs and recorded a 110 WW and 115 YW ratio. His maternal grandam had longevity, raising 11 calves with an average nursing ratio of 102. LOT 24 also scanned a 116 IMF ratio and is a very balanced carcass bull.

Reference
Sire



Reference
Sire

Mytty In Focus

13880818

birth date: 2/18/01

Tattoo: 109

Sire: **S A F FOCUS OF E R #** MGS: **SITZ ALLIANCE 6595 #**

CED **14** BW **-1.3** WW **54** YW **100** SC **1.73** CEM **12** MILK **25**
 MARB **.62** RE **-.07** \$W **38.43** \$F **37.71** \$G **30.06** \$B **44.41**

25

STEVENSON IN FOCUS A779W

Bull

+16371622

birth date: 1/11/09

Tattoo: A779W

S A F FOCUS OF E R #

S A F FAME#

MYTTY IN FOCUS

G D A R FOREVER LADY 246

MYTTY COUNTESS 906

SITZ ALLIANCE 6595#

BALDRIDGE COUNTESS 357

GARDENS EXPEDITION#

N BAR EMULATION EXT#

STEVENSON QUEEN MOTHER 864K#

GREEN GARDEN GINA 2268 S2

STEVENSON QUEEN MOTHER 4158

BEEFLAND INTERMEDIATE K546

STEVENSON QUEEN MOTHER 485D

Birth Weight **95** BW **I+1.8** WW **I+49** Milk **I+28** YW **I+97**

CE **★★★**

Marb **I+0.46**

RE **I-0.12**

PAP **50+**

LOT 25 is an ET that ranks in the top 15% for YW EPD. Dam is an outstanding female recording 6 NR 112, 5 YR 112 and 23 103 IMF. He also recorded 100 for both IMF and REA scan ratios.

26

STEVENSON IN FOCUS C637W

Bull

16539428

birth date: 1/30/09

Tattoo: C637W

S A F FOCUS OF E R #

S A F FAME#

MYTTY IN FOCUS

G D A R FOREVER LADY 246

MYTTY COUNTESS 906

SITZ ALLIANCE 6595#

BALDRIDGE COUNTESS 357

A A R RAMBLER 779#

A A R RAMBLER 356

STEVENSON BEAUTY L809

A A R BLACKBIRD 582

STEVENSON BEAUTY 6548

STEVENSON MAXIMUM 42C

STEVENSON BEAUTY S55F

Birth Weight **88** BW **I+0.9** WW **I+45** Milk **I+22** YW **I+87**

CE **★★★★**

Marb **I+0.33**

RE **I-0.07**

PAP **40**

Four star calving ease, LOT 26 recorded 105 YW. Second and third dams record 5 NR 104 and 3 NR 101.

27

STEVENSON IN FOCUS C504W

Bull

16539362

birth date: 2/1/09

Tattoo: C504W

S A F FOCUS OF E R #

S A F FAME#

MYTTY IN FOCUS

G D A R FOREVER LADY 246

MYTTY COUNTESS 906

SITZ ALLIANCE 6595#

BALDRIDGE COUNTESS 357

STEVENSON ROYCE 741C#

G D A R ROYCE 131#

STEVENSON ELINE ERICA 528K

AHLGRENS ESTELLA 2758 E T E#

JRS ELINE ERICA 95A

G T MAXIMUM#

J R S ELINE ERICA 3107#

Birth Weight **93** BW **I+1.5** WW **I+47** Milk **I+21** YW **I+86**

CE **★★★**

Marb **I+0.31**

RE **I-0.04**

PAP **50+**

LOT 27 recorded 106 WW and 102 YW. His dam records 7 NR 100 and 6 YR 103.



28

DIAMOND JUSTICE W558

Bull 16317435

birth date: 1/23/09

Tattoo: W558

ER JUSTICE N013#
DIAMOND JUSTICE 901S
 ERISKAY OF ER J238#

ER FALCON K177#
 JR HENRIETTA 001L
 E R KNIGHT 529
 ERISKAY OF R R 1448

VERMILION PAYWEIGHT J847#

DIAMOND BLACKCAP 371R
 DIAMOND BLACKCAP 826N

VERMILION DATELINE 7078#
 VERMILION LASS 7969
 SUMMITCREST DIAMOND 0K24
 DIAMOND BLACKCAP 307H

Birth Weight **87** BW **+1.6** WW **+51** Milk **+24** YW **I+100**

CE **★★★** Marb **+0.55** RE **+0.22** PAP **42**

The combination of DIAMOND JUSTICE 901S on PAYWEIGHT daughters has worked extremely well. LOT 28 scanned a 123 IMF and 103 REA ratio and recorded a 115 YW ratio at a year of age. His dam comes from the high production BLACKCAP cow family that consistently produces lead off bulls and sale toppers.

29

DIAMOND FRANCHISE 9476

Bull 16335409

birth date: 2/23/09

Tattoo: 9476

C A FUTURE DIRECTION 5321#
BASIN FRANCHISE P142
 BASIN CHLOE 812L

G A R PRECISION 1680#
 C A MISS POWER FIX 308
 GARDENS EXPEDITION#
 BASIN CHLOE 6198

VERMILION YELLOWSTONE#

DIAMOND ENCHANTRESS P943#
 DIAMOND ENCHANTRESS 424F#

VERMILION DATELINE 7078#
 VERMILION B JESTRESS 3912
 BASIN RAINMAKER 814Z#
 DIAMOND ENCHANTRESS 1D

Birth Weight **97** BW **+2.8** WW **+50** Milk **+26** YW **I+100**

CE **★★** Marb **+0.49** RE **+0.42** PAP **39**

LOT 29 is a moderate framed, thick bull that recorded a 108 WR, 112 YW, 116 IMF and 108 REA ratio. His dam has recorded 4 NR 106 and her dam is the maternal great grandam of the high selling bull in our fall 2009 sale, DIAMOND STEAKHOUSE 9378 that sold for \$28,000 and has been identified as a potential high altitude sire.

30

DIAMOND MAX 46W6

Bull 16317515

birth date: 1/29/09

Tattoo: 46W6

G T MAXIMUM#
BASIN MAX 602C#
 BASIN ELINE ERICA 315U#

SCOTCH CAP#
 GT MISS TRAVELER 58#
 G D A R RAINMAKER 340#
 BASIN ELINE ERICA 1313

BASIN EXT L512

KEYSTONE LILY 466
 KEYSTONE LILY 990

BROOKS EXT 792#
 BASIN EILEENMERE LASS 836B#
 BASIN RAINMAKER F144
 KEYSTONE LILY 8-454

Birth Weight **94** BW **+2.0** WW **+40** Milk **+20** YW **I+85**

CE **★★★** Marb **+0.15** RE **-0.04** PAP **41**

LOT 30 is a direct son of the legendary BASIN MAX 602C, who is known for his depth of body, fleshing ability and overall performance. LOT 30 recorded a 106 YW ratio and his maternal grandam has recorded 8 NR 104.



31

STEVENSON PENDLETON W787

Bull 16301052 birth date: 1/12/09 Tattoo: W787

S A V FINAL ANSWER 0035#
HARB PENDLETON 765 J H
 H A R B BLACK LADY 375 J H#

SITZ TRAVELER 8180#
 S A V EMULOUS 8145
 H A R B HIGH PLAINS 975 JH#
 H A R B BLACK LADY 073 J H#

BOYD ON TARGET 1083
STEVENSON CLOVA PRIDE Y5T7
 STEVENSON CLOVA PRIDE L901

S A F 598 BANDO 5175#
 BOYD FOREVER LADY 7095
 ROCKN D AMBUSH 1531#
 STEVENSON CLOVA PRIDE 7229

Birth Weight **80** BW **+1.9** WW **+54** Milk **+22** YW **I+100**

CE **★★★★** Marb **+0.22** RE **+0.03** PAP **50+**

LOT 31 is a calving ease bull that ranks in the top 15% for WW EPD and top 10% for YW EPD. Grandam is our highest valued donor cow with more than \$600,000 worth of progeny sales.

32

STEVENSON PENDLETON 722W

Bull 16301032 birth date: 1/12/09 Tattoo: 722W

S A V FINAL ANSWER 0035#
HARB PENDLETON 765 J H
 H A R B BLACK LADY 375 J H#

SITZ TRAVELER 8180#
 S A V EMULOUS 8145
 H A R B HIGH PLAINS 975 JH#
 H A R B BLACK LADY 073 J H#

CAR DUKE 104#
STEVENSON CLOVA PRIDE R402T
 STEVENSON CLOVA PRIDE L901

CAR TRACKER 904#
 C A R MISS RAINDANCER 421#
 ROCKN D AMBUSH 1531#
 STEVENSON CLOVA PRIDE 7229

Birth Weight **66** BW **-0.5** WW **+60** Milk **+23** YW **I+102**

CE **★★★★** Marb **+0.31** RE **+0.00** PAP **50+**

Four star calving ease, LOT 32 recorded 108 WW and 105 YW to rank in the top 3% for WW EPD and top 10% for YW EPD. He recorded 103 REA. His dam was a first calf heifer and his grandam is our most prolific and highest valued donor cow.

33

STEVENSON PENDLETON 7089

Bull 16301009 birth date: 1/26/09 Tattoo: 7089

S A V FINAL ANSWER 0035#
HARB PENDLETON 765 J H
 H A R B BLACK LADY 375 J H#

SITZ TRAVELER 8180#
 S A V EMULOUS 8145
 H A R B HIGH PLAINS 975 JH#
 H A R B BLACK LADY 073 J H#

STEVENSON BENCHMARK N190
STEVENSON PRIDE LADY 4317
 STEVENSON PRIDE LADY 6784#

C A FUTURE DIRECTION 5321#
 STEVENSON ELGA L706
 BOYD CAPTAIN 2067#
 STEVENSON PRIDE LADY 91F

Birth Weight **89** BW **+2.9** WW **+53** Milk **+25** YW **I+93**

CE **★★** Marb **+0.37** RE **-0.12** PAP **50+**

LOT 33 recorded 107 WW and 106 YW to rank in the top 15% for WW EPD and top 20% for YW EPD. Dam was a first calf heifer and next two dams record 2 NR 104, 2 YR 108 and 8 NR 100 with 6 YR 103.



34

STEVENSON ULTIMATE W512

Bull 16391624 *birth date:* 2/16/09 *twin* *Tattoo:* W512
 S S OBJECTIVE T510 OT26# S S TRAVELER 6807 T510#
G A R ULTIMATE S S MISS RITA R011 7R8
 G A R LOAD UP 1314 RAB-GAR LOAD UP 4049J
 G A R NEW DESIGN 80
 WAR ALLIANCE 9126 6006# SITZ ALLIANCE 6595#
STEVENSON ENCHANTRESS 28R3 WAR BANDO 6006 598 4053
 STEVENSON ENCHANTRESS L906 ROCKN D AMBUSH 1531#
 STEVENSON ENCHANTRESS 449J#

Birth Weight **54** *BW* **I+1.8** *WW* **I+59** *Milk* **I+25** *YW* **I+105**

CE ★★★★★ *Marb* **+0.49** *RE* **+0.43** *PAP* **50+**

LOT 34 has a big time spread for EPDs. He recorded 102 WW and 104 YW along with an outstanding 112 IMF and 123 REA. He ranks in the top 4% for both WW and YW EPDs. His second and third dams record an impressive 4 NR 107, 5 YR 103 and 8 NR 103 with 6 YR 106. LOT 34 ranks in the top 25% for MARB EPD and top 10% for REA EPD.

35

STEVENSON ULTIMATE 7709

Bull 16283136 *birth date:* 1/20/09 *Tattoo:* 7709
 S S OBJECTIVE T510 OT26# S S TRAVELER 6807 T510#
G A R ULTIMATE S S MISS RITA R011 7R8
 G A R LOAD UP 1314 RAB-GAR LOAD UP 4049J
 G A R NEW DESIGN 80
 21AR COAL BANK C014 BASIN MAX 602C#
STEVENSON ZARA 2437 LEACHMAN LASS 5014#
 STEVENSON ZARA 5M40 ROCKN D AMBUSH 1531#
 STEVENSON ZARA 354#

Birth Weight **70** *BW* **+0.3** *WW* **+56** *Milk* **+25** *YW* **I+102**

CE ★★★★★ *Marb* **+0.42** *RE* **+0.14** *PAP* **41**

Four star calving ease, LOT 35 recorded 107 WW and 111 YW with 102 IMF. He has a big spread for EPDs ranking in the top 10% for both WW and YW EPDs. Dam was a first calf heifer. His next two dams recorded 6 NR 102, 5 YR 101 and 10 NR 107.

36

STEVENSON ULTIMATE 7969

Bull 16283167 *birth date:* 1/29/09 *Tattoo:* 7969
 S S OBJECTIVE T510 OT26# S S TRAVELER 6807 T510#
G A R ULTIMATE S S MISS RITA R011 7R8
 G A R LOAD UP 1314 RAB-GAR LOAD UP 4049J
 G A R NEW DESIGN 80
 21AR COAL BANK C014 BASIN MAX 602C#
STEVENSON HEATHER ZELDA T506 LEACHMAN LASS 5014#
 STEVENSON HEATHER ZELDA 2425 BOYD CAPTAIN 2067#
 STEVENSON HEATHER ZELDA 45M1

Birth Weight **79** *BW* **+2.6** *WW* **+59** *Milk* **+26** *YW* **I+106**

CE ★★★ *Marb* **+0.50** *RE* **+0.35** *PAP* **48**

LOT 36 recorded an impressive 110 WW and 112 YW along with 114 IMF and 117 REA. He ranks in the top 4% for WW and YW EPDs along with a top 20% EPD for both MARB and REA. His dam was a first calf heifer. Grandam records 3 NR 104 and 2 YR 104.



37

STEVENSON IN FOCUS 7869

Bull 16267659

birth date: 1/21/09

Tattoo: 7869

S A F FOCUS OF E R#

S A F FAME#

MYTTY IN FOCUS

G D A R FOREVER LADY 246

MYTTY COUNTESS 906

SITZ ALLIANCE 6595#

BALDRIDGE COUNTESS 357

21AR COAL BANK C014

BASIN MAX 602C#

STEVENSON CLOVA PRIDE 5637

LEACHMAN LASS 5014#

STEVENSON CLOVA PRIDE 3945

STEVENSON BENCHMARK N190

STEVENSON CLOVA PRIDE 9733

Birth Weight **77** BW **+1.0** WW **+52** Milk **+25** YW **I+98**

CE **★★★★** Marb **+0.25** RE **+0.26** PAP **42**

Four star calving ease, LOT 37 recorded 101 for both WW and YW along with a huge REA at 125. He ranks in the top 20% for WW EPD and top 15% for YW EPD. Dam was a first calf heifer. Next two dams record 3 NR 103, 3 YR 105 and 2 NR 106 with 2 YR 106.

38

STEVENSON IN FOCUS C761W

Bull 16539347

birth date: 1/26/09

Tattoo: C761W

S A F FOCUS OF E R#

S A F FAME#

MYTTY IN FOCUS

G D A R FOREVER LADY 246

MYTTY COUNTESS 906

SITZ ALLIANCE 6595#

BALDRIDGE COUNTESS 357

ROCKN D AMBUSH 1531#

PARAMONT AMBUSH 2172#

JR LASS 081J

MS BLACKCAP BAND OF R D 1301

JOLLY R LASS 237A#

J R EASY TRAVELER 8029#

JOLLY R LASS 9252#

Birth Weight **75** BW **I-0.6** WW **I+45** Milk **I+21** YW **I+87**

CE **★★★★** Marb **I+0.65** RE **I+0.06** PAP **38**

Four star calving ease, LOT 38 recorded 101 YW. First two dams record 8 NR 101, 7 YR 106 and 9 NR 106 with 8 YR 106.

39

STEVENSON IN FOCUS C770W

Bull 16539431

birth date: 1/29/09

Tattoo: C770W

S A F FOCUS OF E R#

S A F FAME#

MYTTY IN FOCUS

G D A R FOREVER LADY 246

MYTTY COUNTESS 906

SITZ ALLIANCE 6595#

BALDRIDGE COUNTESS 357

STEVENSON SALUTE

ROCKN D AMBUSH 1531#

STEVENSON BRIDGET P936

STEVENSON MISS BLIZZARD 6759

STEVENSON BRIDGET B18J

IMPACT 2000 G G#

JRS BRIDGET 921A#

Birth Weight **78** BW **I+0.0** WW **I+48** Milk **I+23** YW **I+83**

CE **★★★★** Marb **I+0.51** RE **I+0.04** PAP **42**

Four star calving ease, LOT 39 recorded 101 WW.



40

STEVENSON IN FOCUS C764W

Bull 16539356

birth date: 1/28/09

Tattoo: C764W

S A F FOCUS OF E R#

S A F FAME#

MYTTY IN FOCUS

G D A R FOREVER LADY 246

MYTTY COUNTESS 906

SITZ ALLIANCE 6595#

BALDRIDGE COUNTESS 357

G A R INTEGRITY#

BON VIEW NEW DESIGN 1407#

STEVENSON MISS ANGUS 4646

G A R PRECISION 1019

STEVENSON MISS ANGUS 6334

BOYD ON TARGET 1083

STEVENSON MISS ANGUS 362F

Birth Weight **70** BW **I-0.7** WW **I+46** Milk **I+23** YW **I+86**

CE **★★★★** Marb **I+0.51** RE **I-0.12** PAP **43**

Four star calving ease, LOT 40 recorded 102 WW and 100 YW. Dam was a first calf heifer.

41

STEVENSON IN FOCUS C508W

Bull 16539360

birth date: 2/6/09

Tattoo: C508W

S A F FOCUS OF E R#

S A F FAME#

MYTTY IN FOCUS

G D A R FOREVER LADY 246

MYTTY COUNTESS 906

SITZ ALLIANCE 6595#

BALDRIDGE COUNTESS 357

STEVENSON TRAVELER JR 445D

MED ROCK TRAVELER JR#

STEVENSON BRIDGET 5267#

JRS PRIDE 984Z

STEVENSON BRIDGET B12E

MAXIMUM 873A OF JRS#

R J S BRIDGET

Birth Weight **87** BW **I+0.3** WW **I+42** Milk **I+25** YW **I+75**

CE **★★★★** Marb **I+0.23** RE **I-0.12** PAP **48**

Four star calving ease, LOT 41's dam is a long time production cow recording an impressive 11 NR 104 and 11 YR 100.

42

STEVENSON IN FOCUS C649W

Bull 16539380

birth date: 1/27/09

Tattoo: C649W

S A F FOCUS OF E R#

S A F FAME#

MYTTY IN FOCUS

G D A R FOREVER LADY 246

MYTTY COUNTESS 906

SITZ ALLIANCE 6595#

BALDRIDGE COUNTESS 357

GARDENS PRIME TIME#

R R TRAVELER 5204#

BASIN CLOVA PRIDE 7479

GREEN GARDEN SUSIE 1246 S1#

BASIN CLOVA PRIDE 5797

STEVENSON MAXIMUM 42C

BASIN CLOVA PRIDE 308E#

Birth Weight **78** BW **I-1.2** WW **I+47** Milk **I+21** YW **I+81**

CE **★★★★** Marb **I+0.28** RE **I-0.02** PAP **45**

Four star calving ease, LOT 42 recorded 101 WW.

43**STEVENSON PENDLETON W762****Bull**

16301018

birth date: 1/16/09

Tattoo: W762

S A V FINAL ANSWER 0035#

SITZ TRAVELER 8180#

HARB PENDLETON 765 J H

S A V EMULOUS 8145

H A R B BLACK LADY 375 J H#

H A R B HIGH PLAINS 975 JH#

H A R B BLACK LADY 073 J H#

BOYD ON TARGET 1083

S A F 598 BANDO 5175#

STEVENSON LUCKY CHARM 573T

BOYD FOREVER LADY 7095

STEVENSON LUCKY CHARM R371

BON VIEW NEW DESIGN 1407#

STEVENSON LUCKY CHARM N114

Birth Weight	85	BW	+1.9	WW	+55	Milk	+24	YW	I+100
--------------	-----------	----	-------------	----	------------	------	------------	----	--------------

CE	★★★★	Marb	+0.27	RE	+0.13	PAP	39
----	-------------	------	--------------	----	--------------	-----	-----------

LOT 43 recorded 105 WW and 104 YW with 107 REA. He ranks in the top 10% for both WW and YW EPDs.

44**STEVENSON PENDLETON W711****Bull**

16300995

birth date: 1/30/09

Tattoo: W711

S A V FINAL ANSWER 0035#

SITZ TRAVELER 8180#

HARB PENDLETON 765 J H

S A V EMULOUS 8145

H A R B BLACK LADY 375 J H#

H A R B HIGH PLAINS 975 JH#

H A R B BLACK LADY 073 J H#

BOYD ON TARGET 1083

S A F 598 BANDO 5175#

STEVENSON WILSAR 2337

BOYD FOREVER LADY 7095

STEVENSON WILSAR 0132

BON VIEW NEW DESIGN 1407#

STEVENSON WILSAR K823

Birth Weight	75	BW	+0.4	WW	+55	Milk	+26	YW	I+99
--------------	-----------	----	-------------	----	------------	------	------------	----	-------------

CE	★★★★	Marb	+0.51	RE	-0.10	PAP	43
----	-------------	------	--------------	----	--------------	-----	-----------

Four star calving ease, LOT 44 recorded 108 WW and 104 YW with 120 IMF. He ranks in the top 10% for both WW and YW EPDs. Dam was a first calf heifer while his next dam records 6 NR 102 and 5 YR 108.

45**STEVENSON PENDLETON W769****Bull**

16301022

birth date: 1/18/09

Tattoo: W769

S A V FINAL ANSWER 0035#

SITZ TRAVELER 8180#

HARB PENDLETON 765 J H

S A V EMULOUS 8145

H A R B BLACK LADY 375 J H#

H A R B HIGH PLAINS 975 JH#

H A R B BLACK LADY 073 J H#

BOYD ON TARGET 1083

S A F 598 BANDO 5175#

STEVENSON CLOVA PRIDE 75T2

BOYD FOREVER LADY 7095

STEVENSON CLOVA PRIDE L901

ROCKN D AMBUSH 1531#

STEVENSON CLOVA PRIDE 7229

Birth Weight	68	BW	-0.1	WW	+59	Milk	+23	YW	I+100
--------------	-----------	----	-------------	----	------------	------	------------	----	--------------

CE	★★★★	Marb	+0.16	RE	-0.01	PAP	46
----	-------------	------	--------------	----	--------------	-----	-----------

Four star calving ease, LOT 45 recorded 107 WW and 101 YW. He is a big time spread bull and ranks in the top 4% for WW EPD and top 10% for YW EPD. Dam was a first calf heifer and grandam is one of our all time best.

46**STEVENSON PENDLETON W724****Bull**

16301006

birth date: 1/25/09

Tattoo: W724

S A V FINAL ANSWER 0035#

SITZ TRAVELER 8180#

HARB PENDLETON 765 J H

S A V EMULOUS 8145

H A R B BLACK LADY 375 J H#

H A R B HIGH PLAINS 975 JH#

H A R B BLACK LADY 073 J H#

BOYD ON TARGET 1083

S A F 598 BANDO 5175#

STEVENSON PRIDE LADY 34T1

BOYD FOREVER LADY 7095

STEVENSON PRIDE LADY 4890

BASIN MAX 602C#

STEVENSON PRIDE LADY 684D

Birth Weight	77	BW	+1.6	WW	+48	Milk	+23	YW	I+98
--------------	-----------	----	-------------	----	------------	------	------------	----	-------------

CE	★★★★	Marb	+0.17	RE	-0.08	PAP	45
----	-------------	------	--------------	----	--------------	-----	-----------

Four star calving ease, LOT 46 recorded 106 YW to rank in the top 15% for YW EPD. Grandam posts 5 NR 111 and 5 YR 106.

47**DIAMOND IMAGE MAKER W440**

Bull +16335324

birth date: 2/17/09

Tattoo: W440

H A IMAGE MAKER 0415#
HA IMAGE MAKER 6550
HA RITO LADY 3515HERO 6267 OF R R 2418#
H A RITO BLACKCAP 9038
BR MIDLAND#
H A 4167 LADY 1017B C C BUSHWACKER 41-93#
DIAMOND TROJAN ERICA 67R
DIAMOND TROJAN ERICA 924LPARAMONT AMBUSH 2172#
R C ANITA T BANDO 918903
BASIN MAX 602C#
DIAMOND TROJAN ERICA 777JBirth Weight **84** BW **I+3.5** WW **I+5.6** Milk **I+23** YW **I+93**CE ★ Marb **I+0.16** RE **I+0.14** PAP **45**

We calved out our fist IMAGE MAKER daughters this spring and were totally impressed. LOT 47 is an ET bull out of a third generation donor cow that had had many sale toppers in the last few Stevenson Genetic sales. Her dam had more impact on our herd than any other dam, with a production record of 4 NR 107, 4 YW 102, 65 IMF 107 and 65 REA 104. Her son DIAMOND BUSHWACKER 9095 who is a full brother to the dam of LOT 47 is leaving behind and outstanding set of daughters.

48**DIAMOND CE DELUXE 7949**

Bull 620778715

birth date: 1/16/09

Tattoo: 7949

C A FUTURE DIRECTION 5321#
STEVENS ON CE DELUXE 1914
FSHK PRIDE 180#G A R PRECISION 1680#
C A MISS POWER FIX 308
SITZ ALLIANCE 6595#
FSHK PRIDE 725BOYD ON TARGET 1083
DIAMOND CLOVA PRIDE 275TT
STEVENS ON CLOVA PRIDE 642F#S A F 598 BANDO 5175#
BOYD FOREVER LADY 7095
DALEBANKS BANDO A 2166
JRS CLOVA PRIDE 254BBirth Weight **70** BW **+1.8** WW **+5.4** Milk **+24** YW **+103**CE ★★★ Marb **+0.64** RE **+0.10** PAP **42**

LOT 48 is a heifer bull that recorded a 107 WR and 113 YW ratio and had an actual birth weight of 70 lbs. He ranks in the top 10% for MARB and top 15% for WW EPD.

49**DIAMOND ULTIMATE 9513**

Bull 16336069

birth date: 2/27/09

Tattoo: 9513

S S OBJECTIVE T510 0T26#
G A R ULTIMATE
G A R LOAD UP 1314S S TRAVELER 6807 T510#
S S MISS RITA R011 7R8
RAB-GAR LOAD UP 4049J
G A R NEW DESIGN 80BASIN MAX 602C#
DIAMOND LASS 675R
BASIN LASS 410FG T MAXIMUM#
BASIN ELINE ERICA 315U#
MED ROCK TRAVELER JR#
BASIN LASS 91DBirth Weight **94** BW **+4.0** WW **+4.8** Milk **+23** YW **I+84**CE ★ Marb **+0.39** RE **+0.33** PAP **39**

LOT 49 scanned a 106 IMF and 103 REA ratio and is a balanced carcass bull. The sire of LOT 49, ULTIMATE is looking to improve carcass and make outstanding daughters.

50**DIAMOND BIG SPREAD 732W**

Bull 16317345

birth date: 1/18/09

Tattoo: 732W

HARB PENDLETON 765 J H
21AR BIG SPREAD 7012A
21AR BLACKCAP F61ES A V FINAL ANSWER 0035#
H A R B BLACK LADY 375 J H#
LEACHMAN SURE FIRE
SCHMAUS GRID 61EBASIN FRANCHISE P142
DIAMOND MINIVER 7311
DIAMOND MINIVER 506NC A FUTURE DIRECTION 5321#
BASIN CHLOE 812L
BASIN MAX 602C#
DIAMOND MINIVER 302EBirth Weight **74** BW **I+2.3** WW **I+5.8** Milk **I+22** YW **I+102**CE ★★★ Marb **+0.27** RE **+0.36** PAP **39**

LOT 50's sire was selected as the \$30,000, second high selling bull in the 2008 Midland bull test, and his progeny were a highlight in the fall 2009 Stevenson Genetics sale, with his first son, DIAMOND STEAKHOUSE 9378 topping the sale at \$28,000

51**STEVENSON ONE WAY 4119****Bull**

16288217

birth date: 1/23/09

Tattoo: 4119

RITO 112 OF 2536 RITO 616#

RITO 616 OF 4B20 6807#

TC ONE WAY 618

TC QUALITY 7122

G A R PRECISION 2536

RITO 2RT2 OF 0B5 RR TRAVELER#

LANDMARK QUALITY 9248

C A FUTURE DIRECTION 5321#

G A R PRECISION 1680#

STEVENSON CLOVA PRIDE P137

STEVENSON CLOVA PRIDE 8971

C A MISS POWER FIX 308

BASIN MAX 602C#

STEVENSON CLOVA PRIDE H636

Birth Weight	89	BW	+2.9	WW	+43	Milk	+22	YW	I+84
--------------	-----------	----	-------------	----	------------	------	------------	----	-------------

CE ★★

Marb **+0.53**RE **+0.12**PAP **50+**

LOT 51 recorded 102 IMF. Second and third dams record 6 NR 102 and 10 NR 100.

52**STEVENSON ONE WAY 1403W****Bull**

+16371569

birth date: 1/25/09

Tattoo: 1403W

RITO 112 OF 2536 RITO 616#

RITO 616 OF 4B20 6807#

TC ONE WAY 618

TC QUALITY 7122

G A R PRECISION 2536

RITO 2RT2 OF 0B5 RR TRAVELER#

LANDMARK QUALITY 9248

VERMILION PAYWEIGHT J847#

VERMILION DATELINE 7078#

STEVENSON EOLA 92S5

STEVENSON EOLA N905

VERMILION LASS 7969

BON VIEW NEW DESIGN 1407#

STEVENSON EXPEDITION 7619

Birth Weight	98	BW	I+3.1	WW	I+60	Milk	I+27	YW	I+107
--------------	-----------	----	--------------	----	-------------	------	-------------	----	--------------

CE ★

Marb **+0.39**RE **+0.03**PAP **45**

LOT 52 is an ET that ranks in the top 3% for both WW and YW EPDs.

53**STEVENSON ANALYST W610****Bull**

16288996

birth date: 2/11/09

Tattoo: W610

B C C BUSHWACKER 41-93#

PARAMONT AMBUSH 2172#

DR J ANALYST M250

G A R PRECISION 706

R C ANITA T BANDO 918903

G A R PRECISION 1680#

G A R EXT 2114

BOYD CAPTAIN 2067#

SITZ ALLIANCE 6595#

STEVENSON LADY 2216

STEVENSON LADY 4652

BOYD FOREVER LADY 7120

PAWS UP ALLIANCE 9561

STEVENSON LADY 484D#

Birth Weight	77	BW	+0.8	WW	+57	Milk	+26	YW	I+95
--------------	-----------	----	-------------	----	------------	------	------------	----	-------------

CE ★★★★★

Marb **+0.33**RE **+0.36**PAP **38**

Four star calving ease, LOT 53 recorded 105 WW and 104 YW with 109 REA. He ranks in the top 10% for WW EPD and top 20% for YW EPD. First three dams record 2 NR 106, 5 NR 101 and 7 NR 105.

54**STEVENSON FRANCHISE W325****Bull**

16543688

birth date: 2/24/09

Tattoo: W325

C A FUTURE DIRECTION 5321#

G A R PRECISION 1680#

BASIN FRANCHISE P142

BASIN CHLOE 812L

C A MISS POWER FIX 308

GARDENS EXPEDITION#

BASIN CHLOE 6198

TC MOONSHINE 001#

CONNEALY FOREFRONT#

STEVENSON WATERBACK N999#

STEVENSON WATERBACK 462J

TC MOONSHINE 7002

D A TRAVELER 6807 4041

JRS WATERBACK 957Z#

Birth Weight	98	BW	+3.4	WW	+48	Milk	+29	YW	I+85
--------------	-----------	----	-------------	----	------------	------	------------	----	-------------

CE ★

Marb **+0.11**RE **+0.40**PAP **43**

LOT 54 recorded 109 WW and 103 YW with 110 REA. His dam is a top production female that records 5 NR 107 and 5 YR 102.

55**STEVENSON ULTIMATE C888W****Bull**

16534520

birth date: 2/16/09

Tattoo: C888W

S S OBJECTIVE T510 OT26#

S S TRAVELER 6807 T510#

G A R ULTIMATE

S S MISS RITA R011 7R8

G A R LOAD UP 1314

RAB-GAR LOAD UP 4049J

G A R NEW DESIGN 80

STEVENSON SUPREME 505J

SCHURRTOP SUPREME#

STEVENSON PRIDE 7371#

JRS ENCHANTRESS 235Z#

STEVENSON PRIDE 459G

BASIN RAINMAKER 2844#

JRS PRIDE 939Z

Birth Weight	93	BW	I+2.9	WW	I+56	Milk	I+23	YW	I+90
--------------	-----------	----	--------------	----	-------------	------	-------------	----	-------------

CE ★

Marb **I+0.36**RE **I+0.38**PAP **44**

LOT 55 recorded an impressive 112 WW and 107 YW. He ranks in the top 10% for WW EPD and top 30% for YW EPD. Dam posts an impressive record of 7 NR 106, 6 YR 103, 6 IMF 107 and 6 REA 106.

56**STEVENSON ULTIMATE 7689****Bull**

16283133

birth date: 1/19/09

Tattoo: 7689

S S OBJECTIVE T510 OT26#

S S TRAVELER 6807 T510#

G A R ULTIMATE

S S MISS RITA R011 7R8

G A R LOAD UP 1314

RAB-GAR LOAD UP 4049J

G A R NEW DESIGN 80

21AR COAL BANK C014

BASIN MAX 602C#

STEVENSON ESTELLA 1417

LEACHMAN LASS 5014#

STEVENSON ESTELLA 962L

DIAMOND RAINMAKER 154E#

STEVENSON ESTELLA M28J

Birth Weight	73	BW	+1.0	WW	+58	Milk	+24	YW	I+106
--------------	-----------	----	-------------	----	------------	------	------------	----	--------------

CE ★★★★★

Marb **+0.18**RE **+0.27**PAP **48**

Four star calving ease, LOT 56 recorded 104 WW and 107 YW with 104 REA. He ranks in the top 5% for WW EPD and top 4% for YW EPD. Dam was a first calf heifer.

57**STEVENSON UTMOST 7339****Bull**

16282187

birth date: 1/27/09

Tattoo: 7339

S S OBJECTIVE T510 OT26#

S S TRAVELER 6807 T510#

S V F UTMOST T293

S S MISS RITA R011 7R8

S V F RITA P113

G A R INTEGRITY#

G A R PRECISION 1559

MYTTY IN FOCUS

S A F FOCUS OF E R#

STEVENSON WATERBACK 4377

MYTTY COUNTESS 906

STEVENSON WATERBACK P060

BOYD CAPTAIN 2067#

STEVENSON WATERBACK 462K

Birth Weight	79	BW	+1.4	WW	+52	Milk	+25	YW	I+94
--------------	-----------	----	-------------	----	------------	------	------------	----	-------------

CE ★★★★★

Marb **+0.55**RE **+0.13**PAP **44**

Four star calving ease, LOT 57 recorded 102 WW and 107 YW. He's posts a great spread for EPDs ranking in the top 20% for both WW and YW EPDs. Dam was a first calf heifer.

58**STEVENSON ULTIMATE 7799****Bull**

16301104

birth date: 2/13/09

Tattoo: 7799

S S OBJECTIVE T510 OT26#

S S TRAVELER 6807 T510#

G A R ULTIMATE

S S MISS RITA R011 7R8

G A R LOAD UP 1314

RAB-GAR LOAD UP 4049J

G A R NEW DESIGN 80

21AR COAL BANK C014

BASIN MAX 602C#

STEVENSON CLOVA PRIDE 4207

LEACHMAN LASS 5014#

STEVENSON CLOVA PRIDE 0534

BOYD CAPTAIN 2067#

STEVENSON CLOVA PRIDE 8870

Birth Weight	74	BW	+1.2	WW	+59	Milk	+25	YW	I+102
--------------	-----------	----	-------------	----	------------	------	------------	----	--------------

CE ★★★★★

Marb **+0.42**RE **+0.17**PAP **50+**

Four star calving ease, LOT 58 recorded 107 WW and 105 YW with 106 IMF. He ranks in the top 4% for WW EPD and top 10% for YW EPD. Dam was a first calf heifer.

59 STEVENSON MONEYMAKER 7739

Bull 16539596 *birth date:* 1/17/09 *twin* *Tattoo:* 7739
STEVENSON MONEYMAKER R185 BOYD ON TARGET 1083
STEVENSON MONEYMAKER 576T STEVENSON CLOVA PRIDE L888#
STEVENSON ESTELLA 5013 G A R INTEGRITY#
STEVENSON ESTELLA M814
21AR COAL BANK C014 BASIN MAX 602C#
STEVENSON ZARA 28T3 LEACHMAN LASS 5014#
ER ZARA N052 KAHN BROADBAND R A 94L#
ER ZARA L236

Birth Weight **57** *BW* **I+0.7** *WW* **I+62** *Milk* **I+25** *YW* **I+107**

CE ★★★★★ *Marb* **+0.20** *RE* **+0.12** *PAP* **37**

Four star calving ease, LOT 59 recorded 107 for both WW and YW. He scanned 103 REA. He ranks in the top 2% for WW EPD and top 3% for YW EPD.

60 STEVENSON MONEYMAKER 7849

Bull 16301622 *birth date:* 1/23/09 *Tattoo:* 7849
STEVENSON MONEYMAKER R185 BOYD ON TARGET 1083
STEVENSON MONEYMAKER 576T STEVENSON CLOVA PRIDE L888#
STEVENSON ESTELLA 5013 G A R INTEGRITY#
STEVENSON ESTELLA M814
21AR COAL BANK C014 BASIN MAX 602C#
STEVENSON LADY KELTON 4997 LEACHMAN LASS 5014#
STEVENSON LADY KELTON W25P SITZ IMF 7839#
BASIN LADY KELTON D752

Birth Weight **72** *BW* **-0.3** *WW* **+58** *Milk* **+23** *YW* **I+106**

CE ★★★★★ *Marb* **+0.24** *RE* **+0.04** *PAP* **37**

Four star calving ease, LOT 60 recorded 100 WW and 106 YW with 105 REA. He ranks in the top 5% for WW EPD and top 4% for YW EPD. Dam was a first calf heifer.

61 STEVENSON MONEYMAKER C891W

Bull 16581460 *birth date:* 1/27/09 *Tattoo:* C891W
STEVENSON MONEYMAKER R185 BOYD ON TARGET 1083
STEVENSON MONEYMAKER 576T STEVENSON CLOVA PRIDE L888#
STEVENSON ESTELLA 5013 G A R INTEGRITY#
STEVENSON ESTELLA M814
STEVENSON NEW DESIGN 8523 BON VIEW NEW DESIGN 1407#
STEVENSON PRIDE 8625 STEVENSON ANNIE 6438#
STEVENSON PRIDE 662H# IMPACT 2000 G G#
JRS PRIDE 427B

Birth Weight **90** *BW* **I+2.0** *WW* **I+49** *Milk* **I+24** *YW* **I+89**

CE ★★ *Marb* **+0.31** *RE* **+0.19** *PAP* **41**

62 STEVENSON MONEYMAKER 7879

Bull 16301630 *birth date:* 1/31/09 *Tattoo:* 7879
STEVENSON MONEYMAKER R185 BOYD ON TARGET 1083
STEVENSON MONEYMAKER 576T STEVENSON CLOVA PRIDE L888#
STEVENSON ESTELLA 5013 G A R INTEGRITY#
STEVENSON ESTELLA M814
21AR COAL BANK C014 BASIN MAX 602C#
STEVENSON CLOVA PRIDE 5727 LEACHMAN LASS 5014#
STEVENSON CLOVA PRIDE R331 STEVENSON BENCHMARK N190
STEVENSON CLOVA PRIDE 120N

Birth Weight **71** *BW* **+0.5** *WW* **+58** *Milk* **+24** *YW* **I+105**

CE ★★★★★ *Marb* **+0.27** *RE* **+0.15** *PAP* **50+**

Four star calving ease, LOT 62 recorded 101 WW and 105 YW with 100 REA. He ranks in the top 5% for WW EPD and top 4% for YW EPD. His dam was a first calf heifer. His next two dams record 3 NR 100, 3 YR 103 and 2 NR 102 with 2 YR 101.

63**DIAMOND MONEYSMAKER W656****Bull**

+16324851

birth date: 1/29/09

Tattoo: W656

BOYD ON TARGET 1083

S A F 598 BANDO 5175#

STEVENSON MONEYSMAKER R185

BOYD FOREVER LADY 7095

STEVENSON CLOVA PRIDE L888#

VDAR AMBUSH 2478

STEVENSON CLOVA PRIDE 712H

BR MIDLAND#

TWIN VALLEY PRECISION E161#

DIAMOND BLACKCAP P203

DIAMOND BLACKCAP M605

BR ROYAL LASS 7036-19

VERMILION DATELINE 7078#

DIAMOND BLACKCAP 188H

Birth Weight	86	BW	+3.1	WW	+52	Milk	+19	YW	I+96
--------------	-----------	----	-------------	----	------------	------	------------	----	-------------

CE ★

Marb **+0.60**RE **+0.01**PAP **37**

LOT 63 is an embryo bull that scanned an impressive 152 IMF ratio and ranks in the top 15% of the breed for this trait. Five full brothers to LOT 63 sold for a \$3700 average in the fall Stevenson Genetics sale, including a son selling to top commercial breeder Gene Stahl of Deerfield Colony.

65**DIAMOND PAYWEIGHT 9382****Bull**

16580701

birth date: 2/6/09

Tattoo: 9382

VERMILION PAYWEIGHT J847#

VERMILION DATELINE 7078#

DIAMOND PAYWEIGHT 738N

VERMILION LASS 7969

DIAMOND TROJAN ERICA G272

G T MAXIMUM#

BASIN TROJAN ERICA D S 637Y#

BASIN AMBUSH 7161

ROCKN D AMBUSH 1531#

DIAMOND JOYCE 3280

BASIN JOYCE 21B

BASIN TROJAN ERICA 425G#

GARDENS SENSATION 039 S1

BASIN JOYCE 4800

Birth Weight	89	BW	+3.0	WW	+46	Milk	+17	YW	I+91
--------------	-----------	----	-------------	----	------------	------	------------	----	-------------

CE ★★

Marb **+0.26**RE **+0.39**PAP **39**

Lot 65 scanned a 121 IMF and 104 REA ratio and is a long bodied bull. He is also a very balanced bull that ranks in the top 30% for YW EPD. LOT 65's maternal grandam was a top cow recording 7 NR 106.

66**STEVENSON DIRECTION C639W****Bull**

16536675

birth date: 2/17/09

Tattoo: C639W

C A FUTURE DIRECTION 5321#

G A R PRECISION 1680#

STEVENSON DIRECTION 100N

C A MISS POWER FIX 308

STEVENSON HEATHER ZELDA 334L

K F F PRAIRIELENE 532F

W J S HEATHER ZELDA 925Y

N BAR EMULATION EXT V722

N BAR EMULATION EXT#

STEVENSON ENCHANTRESS 125J

J R S ENCHANTRESS 403U

N BAR BLACKBIRD 4307#

BURTHLENE CANNONEER 21R#

J R S ENCHANTRESS 383L

Birth Weight	76	BW	I-0.3	WW	I+46	Milk	I+18	YW	I+67
--------------	-----------	----	--------------	----	-------------	------	-------------	----	-------------

CE ★★★★★

Marb **I+0.37**RE **I+0.42**PAP **50+**

Four star calving ease, LOT 66 recorded 101 WW and 100 YW. Grandam posts an impressive 11 NR 100.

67**STEVENSON PENDLETON 7069****Bull**

16300989

birth date: 1/29/09

Tattoo: 7069

S A V FINAL ANSWER 0035#

SITZ TRAVELER 8180#

HARB PENDLETON 765 J H

S A V EMULOUS 8145

H A R B BLACK LADY 375 J H#

H A R B HIGH PLAINS 975 JH#

H A R B BLACK LADY 073 J H#

STEVENSON BENCHMARK N190

C A FUTURE DIRECTION 5321#

STEVENSON VIXON 0777

BT VIXON 379K

STEVENSON ELGA L706

B T FREEWAY 91F

BT VIXON 286E

Birth Weight	81	BW	+2.8	WW	+52	Milk	+28	YW	I+91
--------------	-----------	----	-------------	----	------------	------	------------	----	-------------

CE ★★

Marb **+0.50**RE **+0.27**PAP **38**

LOT 67 recorded 105 WW and 100 YW with 114 REA. He ranks in the top 20% for WW EPD and top 25% for YW EPD. Dam was a first calf heifer and next two dams record 4 NR 102, 4 YR 104 and 4 NR 109 with 2 YR 103.

68**STEVENSON CE DELUXE W221**

Bull 16287204

birth date: 2/20/09

Tattoo: W221

C A FUTURE DIRECTION 5321#

G A R PRECISION 1680#

STEVENSON CE DELUXE 1914

C A MISS POWER FIX 308

FSHK PRIDE 180#

SITZ ALLIANCE 6595#

FSHK PRIDE 725

STEVENSON MAX J180

BASIN MAX 602C#

STEVENSON PRIDE M654

BLACK TOOTH LADY B 380#

STEVENSON PRIDE 222F

V D A R NEW TREND 123

J R S PRIDE 796X#

Birth Weight	94	BW	+3.0	WW	+48	Milk	+24	YW	I+91
--------------	-----------	----	-------------	----	------------	------	------------	----	-------------

CE ★

Marb **+0.67**RE **+0.20**PAP **39**

LOT 68 recorded 107 IMF and 102 REA. He ranks in the top 25% for YW EPD.

69**STEVENSON ALL AROUND I849W**

Bull +16406250

birth date: 1/31/09

Tattoo: I849W

CONNEALY WHITMAN

BON VIEW NEW DESIGN 208#

CONNEALY ALL AROUND

ELLA TINA OF CONANGA 989

ENTRUST OF CONANGA 894

C R A BEXTOR 872 5205 608#

ENDALLA OF CONANGA 4860

C A FUTURE DIRECTION 5321#

G A R PRECISION 1680#

STEVENSON LADY 626

C A MISS POWER FIX 308

STEVENSON LADY 4654

BOYD ON TARGET 1083

STEVENSON LADY 484D#

Birth Weight	84	BW	I+1.9	WW	I+55	Milk	I+28	YW	I+95
--------------	-----------	----	--------------	----	-------------	------	-------------	----	-------------

CE ★★★★★

Marb **+0.66**RE **+0.18**PAP **50+**

Four star calving ease, LOT 69 is an ET that ranks in the top 10% for WW EPD and top 20% for YW EPD. He recorded 104 IMF and ranks in the top 10% for MARB EPD. Great cow family.

70**STEVENSON RITO 5999**

Bull 16306475

birth date: 2/22/09

Tattoo: 5999

RITO 112 OF 2536 RITO 616#

RITO 616 OF 4B20 6807#

STEVENSON RITO 3926

G A R PRECISION 2536

STEVENSON CLOVA PRIDE 7473

GARDENS EXPEDITION#

STEVENSON CLOVA PRIDE 404G

BROOKS EXT 792#

N BAR EMULATION EXT#

STEVENSON BLACK BEAUTY R311

PRINCESS 4103 B C B R

STEVENSON BLACK BEAUTY N939

BASIN MAX 602C#

STEVENSON BLACK BEAUTY 518J

Birth Weight	77	BW	-1.0	WW	+53	Milk	+23	YW	I+94
--------------	-----------	----	-------------	----	------------	------	------------	----	-------------

CE ★★★★★

Marb **+0.40**RE **0**PAP **45**

Four star calving ease, LOT 70 recorded 108 IMF. He ranks in the top 15% for WW EPD and top 20% for YW EPD. His dam records 3 NR 102, 3 YR 102, 3 IMF 113 and 3 REA 101.

71**STEVENSON UTMOST 7479**

Bull 16282199

birth date: 1/22/09

Tattoo: 7479

S S OBJECTIVE T510 OT26#

S S TRAVELER 6807 T510#

S V F UTMOST T293

S S MISS RITA R011 7R8

S V F RITA P113

G A R INTEGRITY#

G A R PRECISION 1559

MYTTY IN FOCUS

S A F FOCUS OF E R#

STEVENSON CLOVA PRIDE 5T059

MYTTY COUNTESS 906

STEVENSON CLOVA PRIDE 127P

BOYD ON TARGET 1083

STEVENSON CLOVA PRIDE 971L

Birth Weight	64	BW	-0.6	WW	+49	Milk	+26	YW	I+95
--------------	-----------	----	-------------	----	------------	------	------------	----	-------------

CE ★★★★★

Marb **+0.60**RE **+0.19**PAP **50+**

Four star calving ease bull, LOT 71 recorded 102 YW with 101 IMF and 105 REA. He ranks in the top 20% for YW EPD. Dam was a first calf heifer.

72**STEVENSON UTMOST 7579**

Bull 16282205
 S S OBJECTIVE T510 OT26#
S V F UTMOST T293
 S V F RITA P113

birth date: 1/28/09 Tattoo: 7579
 S S TRAVELER 6807 T510#
 S S MISS RITA R011 7R8
 G A R INTEGRITY#
 G A R PRECISION 1559
 S A F FOCUS OF E R#
 MYTTY COUNTESS 906
 BOYD ON TARGET 1083
 STEVENSON MERRICK B24G

MYTTY IN FOCUS

STEVENSON MERRICK T532
 STEVENSON MERRICK B39R

Birth Weight **76** BW **+1.3** WW **+50** Milk **+25** YW **I+92**

CE **★★★★** Marb **+0.67** RE **+0.11** PAP **48**

Four star calving ease, LOT 72 recorded 103 WW and 101 YW with 113 IMF. He ranks in the top 25% for WW and YW EPDs. Dam was a first calf heifer.

73**STEVENSON MONEYMAKER C107W**

Bull 16581461
 STEVENSON MONEYMAKER R185
STEVENSON MONEYMAKER 576T
 STEVENSON ESTELLA 5013

birth date: 1/30/09 Tattoo: C107W
 BOYD ON TARGET 1083
 STEVENSON CLOVA PRIDE L888#
 G A R INTEGRITY#
 STEVENSON ESTELLA M814
 C A FUTURE DIRECTION 5321#
 STEVENSON ROSEBUD J716#
 DAVIS MILLENNIUM 7518
 JRS LASS 207A#

STEVENSON AMERICAN IDOL 9273

STEVENSON LASS 902R
 STEVENSON LASS 204J#

Birth Weight **80** BW **I+1.3** WW **I+52** Milk **I+22** YW **I+96**

CE **★★** Marb **+0.41** RE **+0.11** PAP **47**

74**STEVENSON IN FOCUS 683W**

Bull 16397045
 MYTTY IN FOCUS
STEVENSON IN FOCUS 540T
 STEVENSON ZARA 5808

birth date: 3/11/09 Tattoo: 683W
 S A F FOCUS OF E R#
 MYTTY COUNTESS 906
 VERMILION YELLOWSTONE#
 STEVENSON ZARA 4983#
 BASIN MAX 602C#
 BASIN TROJAN ERICA F736
 VERMILION YELLOWSTONE#
 STEVENSON DIXIE 6848

BASIN DURAMAX 614M#

STEVENSON DIXIE S345
 STEVENSON DIXIE N812

Birth Weight **92** BW **+3.9** WW **+46** Milk **+25** YW **+90**

CE **★** Marb **I+0.42** RE **I-0.04** PAP **45**

75**STEVENSON ULTIMATE C99W**

Bull 16541172
 S S OBJECTIVE T510 OT26#
G A R ULTIMATE
 G A R LOAD UP 1314

birth date: 2/20/09 Tattoo: C99W
 S S TRAVELER 6807 T510#
 S S MISS RITA R011 7R8
 RAB-GAR LOAD UP 4049J
 G A R NEW DESIGN 80
 VERMILION DATELINE 7078#
 VERMILION B JESTRESS 3912
 BASIN AMBUSH 3905#
 BASIN EILEENMERE LASS 836B#

VERMILION YELLOWSTONE#

STEVENSON EILEENMERE 28R1
 BASIN EILEENMERE 261J

Birth Weight **83** BW **I+1.3** WW **I+54** Milk **I+24** YW **I+97**

CE **★★★** Marb **I+0.53** RE **I+0.32** PAP **50+**

LOT 75 recorded 102 WW and YW EPD. He ranks in the top 15% for both WW and YW EPDs.

Reference
Sire



Reference
Sire

G A R Ultimate

15464043

birth date: 8/21/06

Tattoo: 6226

Sire: **S S OBJECTIVE T510 OT26 #** MGS: **RAB-GAR LOAD UP 4049J**

CED **(8)** BW **2.7** WW **(62)** YW **(110)** SC **.35** CEM **7** MILK **(27)**
 MARB **(.61)** RE **(.56)** \$W **(28.42)** \$F **(44.93)** \$G **(38.22)** \$B **(61.67)**

76

STEVENSON ULTIMATE 5899

Bull

16328450

birth date: 2/26/09

Tattoo: 5899

S S OBJECTIVE T510 OT26#

S S TRAVELER 6807 T510#

G A R ULTIMATE

S S MISS RITA R011 7R8

G A R LOAD UP 1314

RAB-GAR LOAD UP 4049J

G A R NEW DESIGN 80

STEVENSON DIRECTION 62N0

C A FUTURE DIRECTION 5321#

STEVENSON EDWINA R191

L L R SARAH TRAVELER#

STEVENSON EDWINA 4871

STEVENSON SUPREME 505J

STEVENSON EDWINA 610D#

Birth Weight **89** BW **+2.3** WW **+50** Milk **+25** YW **I+88**
 CE **★★** Marb **+0.30** RE **+0.26** PAP **39**

77

STEVENSON MONEYMAKER 7719

Bull

16395184

birth date: 2/7/09

Tattoo: 7719

STEVENSON MONEYMAKER R185

BOYD ON TARGET 1083

STEVENSON MONEYMAKER 576T

STEVENSON CLOVA PRIDE L888#

STEVENSON ESTELLA 5013

G A R INTEGRITY#

STEVENSON ESTELLA M814

21AR COAL BANK C014

BASIN MAX 602C#

STEVENSON ZARA 2717

LEACHMAN LASS 5014#

STEVENSON ZARA M078

STEVENSON ROCKN AMBUSH 8540

STEVENSON ZARA 6460

Birth Weight **79** BW **+2.1** WW **+60** Milk **+22** YW **I+104**
 CE **★★★** Marb **+0.32** RE **+0.11** PAP **36**

LOT 77 recorded 101 WW and 102 YW with 104 IMF and 110 REA. He ranks in the top 3% for WW EPD and top 5% for YW EPD.

78

STEVENSON PAYWEIGHT 638W

Bull

16296889

birth date: 1/20/09

Tattoo: 638W

VERMILION PAYWEIGHT J847#

VERMILION DATELINE 7078#

BASIN PAYWEIGHT 025S

VERMILION LASS 7969

BASIN LUCY 3829

C A FUTURE DIRECTION 5321#

BASIN LUCY 178E

BOYD ON TARGET 1083

S A F 598 BANDO 5175#

STEVENSON ZARA S040

BOYD FOREVER LADY 7095

STEVENSON ZARA H40K#

BIG ROK ROAD HOUSE 838

STEVENSON ZARA H23H#

Birth Weight **70** BW **+0.0** WW **+47** Milk **+28** YW **I+95**
 CE **★★★★** Marb **+0.44** RE **-0.03** PAP **43**

Four star calving ease, LOT 78 recorded 113 IMF. He ranks in the top 20% for YW EPD. Dam was a first calf heifer.

Reference
Sire



SEMEN - \$15 CERTIFICATES - \$50 Semen Available Through **ORigen** **ABS**
Volume Discounts Available **STEVENSON GENETICS** Breeder to Breeder Genetic Services

Reference
Sire

21AR Coal Bank C014

14267926

birth date: 1/15/02

Tattoo: C014

Sire: **BASIN MAX 602C** # MGS: **N BAR EMULATION EXT** #

CEP **9** BW **-0.2** WW **51** YW **99** SC **.42** CEM **7** MILK **23**
MARB **.07** RE **-.02** \$W **28.09** \$F **37.88** \$G **5.17** \$B **27.40**

COAL BANK progeny have been identified as an outstanding low PAP testing sire group. Coal Bank sons were the high light of the Stevenson Genetics 2 year old bull sale in March 2010.

Co-owned with Jacobs Livestock of MT and Farview Angus Ranch of ND.

Reference
Sire



SEMEN - \$20 CERTIFICATES - \$50 Semen Available Through **ORigen** **ABS**
Volume Discounts Available **STEVENSON GENETICS** Breeder to Breeder Genetic Services

Reference
Sire

Diamond Steakhouse 9378

16317351

birth date: 1/09/09

Tattoo: 9378

Sire: **21AR BIG SPREAD 7012A** MGS: **DIAMOND AMBUSH 866K**

CEP **3** BW **2.9** WW **75** YW **118** SC **na** CEM **8** MILK **22**
MARB **.22** RE **.13** \$W **33.32** \$F **48.09** \$G **20.00** \$B **45.12**

A look into the future, **STEAKHOUSE**, the \$28,000 high selling bull in the fall 2009 Stevenson Genetics sale to Jensen Angus of WY and later a semen interest to Thunder Creek Angus in Canada, PAP tested at 36 in Hobson, showing high altitude potential. He will be PAPed at higher altitude in the near future. He is one of the thickest bulls we have ever raised and represents some of our newest genetics.

Co-owned with Jensen Angus and Thunder Creek.

Reference
Sire



Reference
Sire

Stevenson Moneymaker R185

15003238

birth date: 2/16/05

Tattoo: R185

Sire: **BOYD ON TARGET 1083** MGS: **VDAR AMBUSH 2478**

CED **2** BW **3.7** WW **63** YW **117** SC **1.03** CEM **6** MILK **19**
 MARB **.33** RE **.03** \$W **24.86** \$F **52.05** \$G **14.47** \$B **38.34**

- ★ The sensation of 2007, **MONEYMAKER** topped our sale at \$100,000 and then went on to be re-syndicated at Express' Big Event for a total valuation of \$810,000
 - ★ Sons topped three consecutive Stevenson Genetic Sales at \$30,000, \$32,500 and \$42,000.
 - ★ **MONEYMAKER**'s dam sold half interest in our 2007 Sale for \$50,000 for a total valuation of \$100,000 and is now serving as a donor for Dubas Cattle Company.
 - ★ **MONEYMAKER** is alive and well, however a long term damaging injury to his testicles has limited frozen semen production. He is continually being used in natural service.
- Co-owned with Express Ranches of OK, Limestone LLC of OK, KCS of MT and MO, Deer Valley Farms of TN, Sandpoint Cattle Co. of NE, 44 Farms of TX and Thunder Creek Angus of SK.*

Reference
Sire



SEMEN - \$30 CERTIFICATES - \$50
Volume Discounts Available

Semen Available Through
STEVENSON GENETICS

ORigen
Breeder to Breeder
Genetic Services



Reference
Sire

21AR Roundup 7005

15883460

birth date: 1/26/07

Tattoo: 7005

Sire: **HARB PENDLETON 765 J H** MGS: **B C C BUSHWACKER 41-93 #**

CED **8** BW **1.3** WW **61** YW **99** SC **na** CEM **8** MILK **24**
 MARB **.25** RE **.44** \$W **33.53** \$F **33.91** \$G **23.13** \$B **46.05**

ROUNDUP is without a doubt one of the most popular young sires this year. He records a 77 lb birth weight for a 90 ratio, 840 lb weaning weight ratioing 124. He scanned a big 17.7 ribeye with a %IMF of 4.98.

Co-owned with Express Ranches, Basin Angus and Monarch Farms.

SIRE LOT INDEX

21AR BIG SPREAD 7012A	50
BASIN FRANCHISE P142	29, 54
BASIN HIGH DEFINITION 3T84	10
BASIN MAX 602C#	30
BASIN PAYWEIGHT 025S	6, 78
CONNELY ALL AROUND	14, 69
DIAMOND DATELINE 4149	22
DIAMOND JUSTICE 901S	28
DIAMOND MAX 568T	5
DIAMOND PAYWEIGHT 738N	23, 24, 65
DR J ANALYST M250	13, 53
G A R ULTIMATE	7, 8, 9, 34, 35, 36, 49, 55, 56, 58, 75, 76
G T SHEAR FORCE	18
HA IMAGE MAKER 6550	47
HARB PENDLETON 765 J H	19, 20, 21, 31, 32, 33, 43, 44, 45, 46, 67
KMK ALLIANCE I87 N24	15
MYTTY IN FOCUS	1, 2, 3, 25, 26, 27, 37, 38, 39, 40, 41, 42
S V F UTMOST T293	57, 71, 72
STEVENSON CE DELUXE 1914	11, 12, 48, 68
STEVENSON DIRECTION 100N	66
STEVENSON IN FOCUS 540T	74
STEVENSON MONEYMAKER 576T	59, 60, 61, 62, 73, 77
STEVENSON MONEYMAKER R185	4, 63
STEVENSON RITO 3926	70
SYDGEN 1407 CORONA 2016	16, 17
TC ONE WAY 618	51, 52

BULLS FOR SALE

Private Treaty Bulls Now Available

Shop at your own pace, pick one or a pot-load.

**Semen Available -
Give Us A Call!**
Many Proven Sires
Available in Volume Discount

STEVENSON GENETICS



P0 Box 272
HOBSON, MT 59452

www.STEVENSONGENETICS.com

STEVENSON ANGUS
406/ 423-7500 office
Keith, Darrell, Bob & Jake
406/ 350-5443 Darrell cell

STEVENSON'S DIAMOND DOT
406/ 374-2250
Clint & Adana
406/ 366-9023 Clint cell